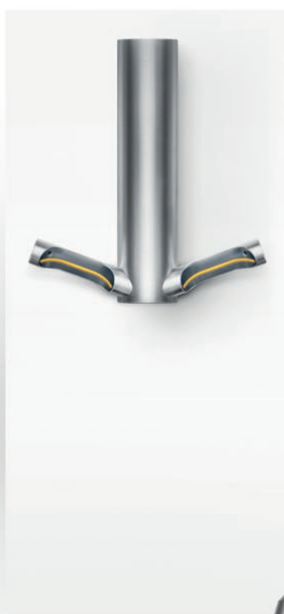


dyson

Dyson technology
for your business



Dyson technology for your business

From hand dryers and hair care to vacuums, purifying fans and lighting, Dyson technology is engineered to create cleaner, more comfortable environments – with a range of industries and spaces in mind.

Offices

Dyson Airblade™ hand dryers, air purification and floorcare technology reassure staff that work is a clean and comfortable place. All with energy saving and sustainability at their heart.

Education

Keeping learning environments clean, hygienic and sustainable has never been more important. Dyson's air purification, vacuum cleaners, lighting and hand dryers go the extra mile to make students and staff more comfortable.

Hotels

Create a five-star guest experience with Dyson technology. From light levels and air treatment to personal care and washroom hygiene, every detail can affect your guests' comfort and wellbeing.

High footfall

High standards of cleanliness are vital when thousands pass through your doors every day. Dyson technology offers a hygienic, convenient and sustainable solution – with an added level of confidence.

Architects and designers

Whether it's offices, schools, airports or hospitality settings, our mission is clear: solve problems with new thinking and design products that simply work better.

“Our mission is simple.
Solve the problems
others ignore.”

James Dyson

James Dyson
Engineer and Founder



Contents

01

| | |
|--|----|
| Dyson Airblade™ | 02 |
| The problems with other hand dryers | 04 |
| Dyson Airblade™ hand dryers work differently | 06 |
| Dyson Airblade™ 9kJ | 08 |
| Dyson Airblade™ V | 10 |
| Dyson Airblade™ Wash and dry | 12 |
| Dyson hand dryers: Overview | 14 |
| Dyson hair care for business | 16 |
| Hair. Our healthy obsession. | 18 |
| Dyson Supersonic™ | 20 |
| Dyson Corrale™ | 22 |
| Dyson Airwrap™ | 24 |
| Dyson hair care: Overview | 26 |
| Powerful, versatile cleaning for your business | 28 |
| Only a Dyson works like a Dyson, Engineered to deep clean your office | 30 |
| Dyson V15 Detect | 32 |
| Dyson V12 Detect Slim | 34 |
| Dyson V11 | 36 |
| Dyson vacuum cleaners: Overview | 38 |
| Air treatment in your workplace | 40 |
| Captures and destroys | 42 |
| Dyson Purifier Big+Quiet | 44 |
| Dyson HEPA Purifier Cool™ Formaldehyde | 46 |
| Dyson Purifier Cool™ Autoreact | 48 |
| Dyson Purifier Hot+Cool™ Formaldehyde | 50 |
| Dyson air treatment: Overview | 52 |
| Dyson Lighting | 54 |
| Most lights don't change. This light changes everything. | 56 |
| Dyson Solarcycle Morph™ | 58 |
| Contact | 62 |

dyson airblade

Only a Dyson dries like a Dyson

Touch-free, HEPA-filtered and independently proven safe, Dyson hand dryers help to create a cleaner, more hygienic washroom. And with no single-use paper waste, you can save on costs, space and CO₂ emissions.



The problems with other hand dryers



Warm air dryers

Warm air dryers can be slow. Which means they're energy hungry, expensive to run and unhygienic.

Dry times can take more than 20 seconds, so many users give up before their hands are dry – risking increased spread of bacteria.

Jet dryers

Other jet dryers might look like a Dyson Airblade™ hand dryer. But without patented Airblade™ technology and HEPA filters as standard, their performance is not the same. They can also lack the power required to draw the air through a HEPA filter.

Inside a drain tank

Some hand dryers collect waste water using drain tanks. But these are unhygienic – providing the perfect breeding ground for bacteria.

Drain tanks must be emptied and cleaned regularly – adding time and effort to the washroom maintenance process, and risking spillage of waste water during disposal.



Did you know?

Dyson microbiologists sampled drain tanks and detected high levels of bacteria.¹

Dyson Airblade™ hand dryers work differently

These are the reasons why:

Dyson digital motor V4

HEPA filter

Airblade™ technology

Fast to dry hands hygienically with HEPA-filtered air.



HEPA filter

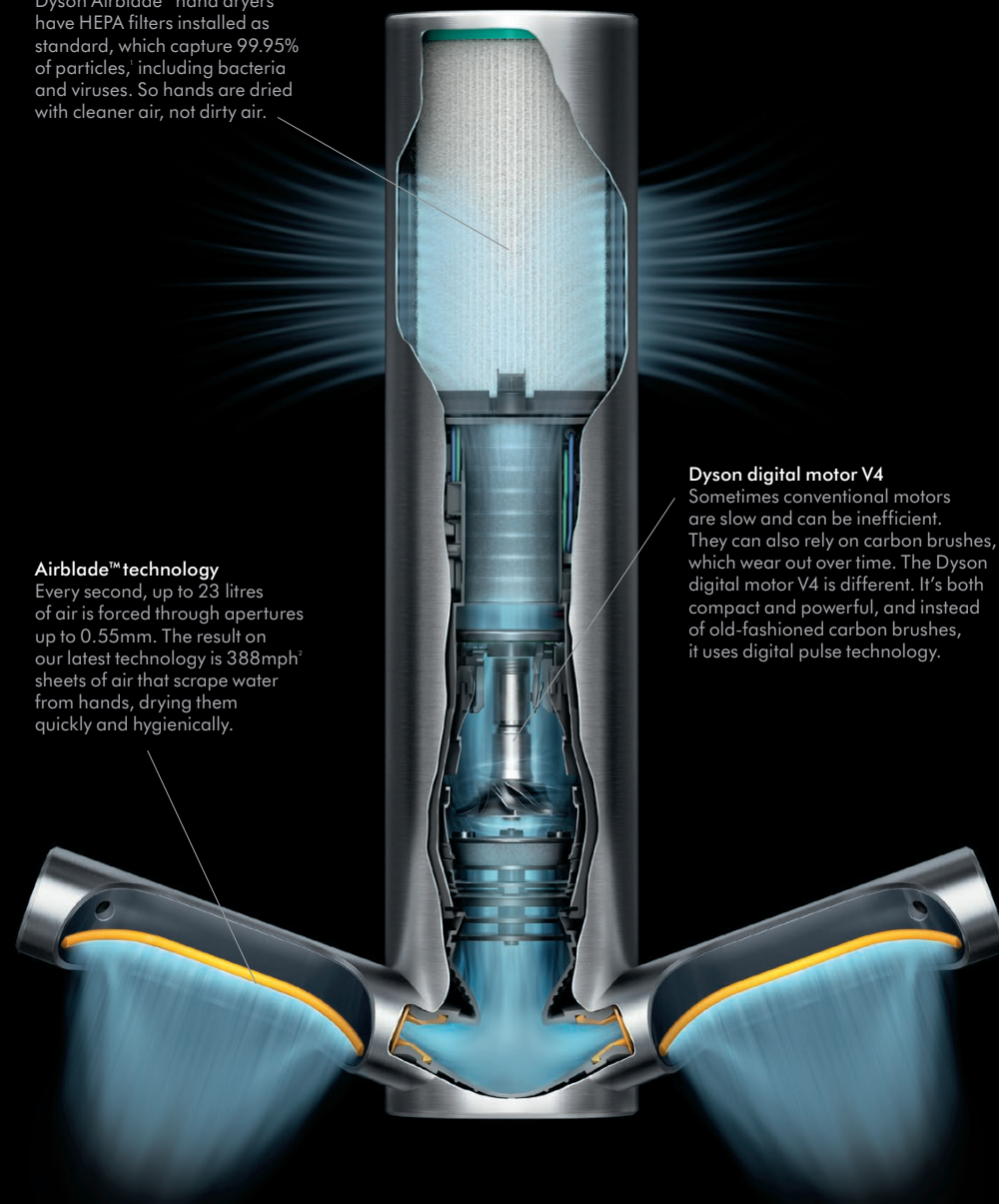
Dyson Airblade™ hand dryers have HEPA filters installed as standard, which capture 99.95% of particles, including bacteria and viruses. So hands are dried with cleaner air, not dirty air.

Airblade™ technology

Every second, up to 23 litres of air is forced through apertures up to 0.55mm. The result on our latest technology is 388mph¹ sheets of air that scrape water from hands, drying them quickly and hygienically.

Dyson digital motor V4

Sometimes conventional motors are slow and can be inefficient. They can also rely on carbon brushes, which wear out over time. The Dyson digital motor V4 is different. It's both compact and powerful, and instead of old-fashioned carbon brushes, it uses digital pulse technology.



1. HEPA filter tested to EN1822-5, by an independent testing laboratory, under prescribed test conditions. 2. Measured in Max mode.

dyson airblade 9kJ

The fastest most energy efficient
HEPA-filtered hand dryer¹



Low energy. Low running costs.

The Dyson Airblade 9kJ hand dryer uses 9.1 kilojoules of energy per dry – so you could reduce running costs when used in Eco mode.

No compromises

While other hand dryers might compromise on noise, hygiene, speed or energy efficiency, we don't. The Dyson Airblade 9kJ hand dryer puts into practice everything we feel makes a better hand dryer – it's the fastest most energy efficient HEPA-filtered hand dryer.¹



Fast hand drying in 10 seconds

Our powerful digital motor spins at 75,000rpm to shift 23 litres of air per second, for a 10-second dry time in Max mode.



Hygienically dries hands

The HEPA filter captures 99.95% of particles as small as 0.1 micron,² including bacteria and airborne viruses.



Curved Blade™ design

Two 0.45mm curved apertures create 388mph sheets of air that follow the contours of your hands, removing more water, in less time.



Two power modes

Switch between Max mode for busy areas of high footfall or Eco mode for energy-efficiency and acoustic control.



Our quietest Airblade™ hand dryer yet

Acoustically engineered to minimise washroom noise.



Less waste

Produces up to 88% less CO₂ emissions than single-use paper towels and costs up to 99% less to run.

1. Dry time and energy consumption calculated for Max mode. Dry time was determined using Dyson test method 769 based on NSF P335 to a measurement of 0.1g residual moisture. 2. HEPA filter tested to EN1822-5, by an independent testing laboratory, under prescribed test conditions.

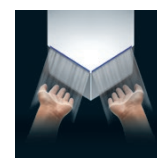
dyson airblade V

Engineered for hygienic performance.
Designed for compact spaces.



Low energy. Low running costs.
The Dyson Airblade V costs up to 98% less to run than paper towels¹ and uses up to 83% less CO₂, so you can reduce running costs and carbon emissions.

More room. Less hassle.
With a slim, compact profile that protrudes just 10cm from the wall, the Dyson Airblade V hand dryer takes up less space in the washroom. While its easy-mount backplate allows for simple, self-service installation, maintenance and replacement.



Scrapes away water at 430mph
HEPA-filtered air is channelled up the machine by the motor, forcing sheets of filtered air through precision apertures at high pressure.



The Dyson digital motor V4
Uses digital pulse technology to draw up to 20 litres of air per second through the machine.



HEPA filter
Captures 99.95% of particles² as small as 0.1 micron from the washroom air, before it's blown onto hands.



Quick drying
With a reprogrammed motor and re-engineered airflows, the Dyson Airblade V dries hands in just 12 seconds.



35% quieter
With improved digital motor technology, the Dyson Airblade V is considerably quieter than its predecessor.



Less waste
This Dyson hand dryer decreases the reliance on single-use paper towels.

dyson airblade wash+dry

Airblade™ hand drying technology in a tap



Long



Short



Wall

Wash and dry hands at the sink
With Airblade™ technology in a tap, hands can be dried at the sink in just 14 seconds. There's no need for users to move to a separate drying area, so less water is dripped on the floor.

Free up your washroom
Other hand drying methods take up valuable wall and floor space. With the Dyson Airblade Wash+Dry hand dryer, there's room for other facilities.



Airblade™ technology
Clean, HEPA-filtered air is forced through apertures 0.55mm wide, scraping water from hands, quickly and hygienically.



Dries hands at 341mph
The Dyson digital motor V4 spins at up to 81,000rpm, so it can draw up to 21 litres of air per second through the machine.



HEPA-filtered air
The HEPA filter captures 99.95% of particles up to 0.3 microns from the washroom air, before it's blown onto hands.



Cleaner washrooms
With Airblade™ technology in a tap, there's no need for a separate drying area, so no water is dripped on the floor.



14-second hand drying
Users spend less time in your washrooms – making busy times easier to manage.



Less waste
This Dyson hand dryer decreases the reliance on single-use paper towels.

Overview

HU
02



Sprayed nickel

White

Engineered for hygienic performance. Designed for compact spaces.

HEPA filters capture 99.95% of particles, including bacteria and viruses²

Slim format – just 100mm deep, no recessing required

Tested and certified by NSF International

Contains antibacterial additive

Touch-free operation

Easy to service. Safe electrical disconnect.

12-second dry time³

HU
03



The fastest most energy efficient HEPA-filtered hand dryer¹

Low energy. 9.1kJ per dry in Eco mode.

Switch between two power modes
Max: 900W or Eco: 650W

No paper mess. No paper waste.

HEPA filter captures 99.95% of particles, including bacteria and viruses²

Tough and robust

Slim format – just 100mm deep, no recessing required

Touch-free operation

Easy to service. Safe electrical disconnect.

10-second dry time³

WD
04 Short

WD
05 Long

WD
06 Wall



Airblade™ hand drying technology in a tap

Wash and dry hands at the sink

No waste water dripped on the floor

Saves space

HEPA filter captures 99.95% of particles the size of bacteria²

Tested and certified by NSF International

Certified for use in food environments by HACCP International

14-second dry time³



BREEM®

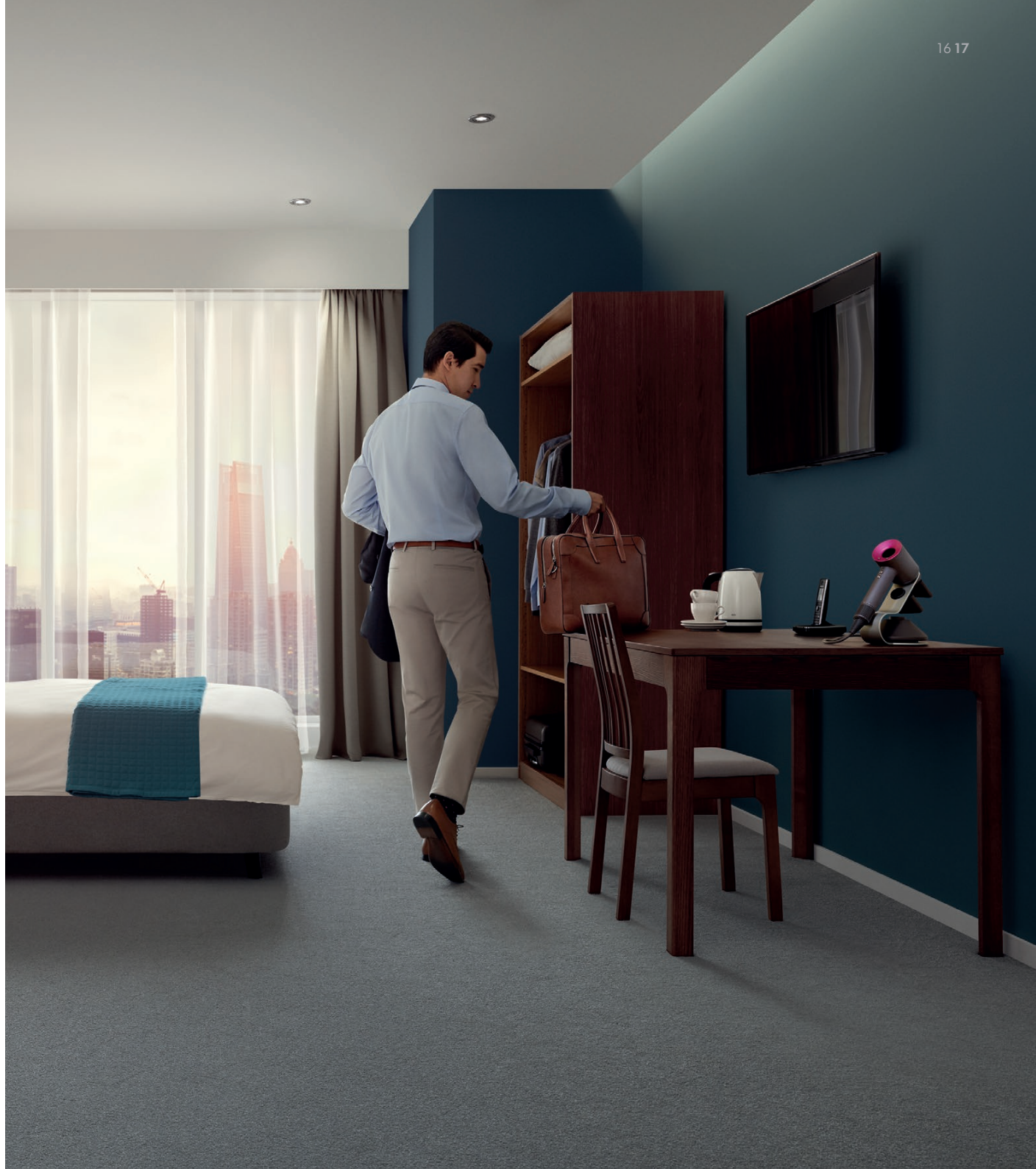
The Carbon label is a trademark of the Carbon Trust. HACCP International non-food certification mark is the registered trademark of HACCP International. HACCP International have certified Dyson products based on their recommended installation and operating conditions.

1. Dry time and energy consumption calculated for Max mode. Dry time was determined using Dyson test method 769 based on NSF P335 to a measurement of 0.1 g residual moisture. 2. HEPA filter tested to EN1822-5, by an independent testing laboratory, under prescribed test conditions. 3. Measured in Max mode.

dyson

Dyson hair care for business

From the rigours of a professional salon to the ultimate styling experience for hotel, gym and spa guests, Dyson hair care technology is the perfect choice for a range of businesses. Engineered to protect against extreme heat damage, the Dyson hair care range places an emphasis on hair health.





“We built one of the most sophisticated hair labs in the world, using state-of-the-art equipment. This way, we could independently study the science of hair.”



Steve Courtney
Concepts Director

1010 miles of hair tested

£75m invested in hair research

1230 prototypes

230 engineers

30 motor specialists
46 electronic engineers
91 design engineers
49 testing engineers
3 hair scientists

Hair. Our healthy obsession.

Thick. Thin. Straight. Wavy. Curly. Coiled. To understand hair from the inside out, we rigorously tested different types in our in-house hair laboratories.

Our specialist team of hair scientists, engineers and stylists looked at everything from the structure of hair to airflow dynamics, to understand thermal, mechanical and chemical damage – and their effect on hair health.

We started by researching the effect of water and high temperatures on hair. Each hair strand contains trillions of hydrogen bonds that are modified and reset during styling, either by using heat or water, or a combination of both.

Our research showed us that temperatures above 150°C can cause extreme heat damage. Above 230°C hair melts.

We had to find a way to style without extreme heat.

dyson supersonic

Fast drying. No extreme heat.
Engineered for different hair types.



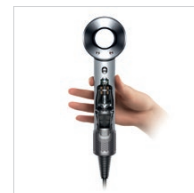
Domestic vs. Professional

The Dyson Supersonic™ professional hair dryer has the following additional features:

- 3.3m professional length cable
- Professional styling concentrator
- Heavy duty filter
- Hidden cold shot button
- Exclusive colour



Fast drying
The Dyson digital motor V9 generates high pressure airflow for fast drying – perfect for back-to-back appointments.



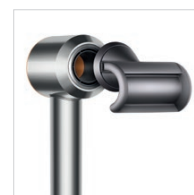
Light in the hand
The motor is positioned in the handle for balance and comfort for all-day use. The head is shorter so you can reach tricky areas with ease.



Acoustically tuned
The powerful motor is engineered for low noise to help create a more pleasant salon ambience.



Powerful airflow
Air Multiplier™ technology amplifies air by three times.



Magnetic styling attachments
A complete suite of attachments engineered for versatile styling and to cater to your clients' needs.



No extreme heat
Intelligent heat control measures the temperature 20 times a second to prevent damage and protect your client's shine.

What's in the box



Flyaway attachment
Lifts longer hair and hides flyaways, giving you a smooth, shiny finish.¹



Styling concentrator
A precise blade of air for styling.



Diffuser
Even diffusion for defined curls and waves.



Gentle air attachment
Fast, yet gentle styling, for fine hair and sensitive scalps.



Wide tooth comb attachment
For curly and coily hair. De-tangles and lengthens hair as it dries.

1. For use on dry and straight[ened] hair.

dyson corrale

The Dyson Corrale™ straightener uses flexing plates that shape to gather hair

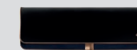


Domestic vs. Professional

The Dyson Supersonic™ professional hair dryer has the following additional features:

- Exclusive colour
- Longer cable

What's in the box



Heat-resistant travel pouch
Safely stores the straightener, with a separate protector for the Flight-ready tag.



Charging dock
Neatly stores and charges your straightener. Place in the dock between styling to boost charge.



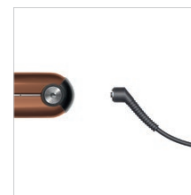
Magnetic 360° charging cable
Rotates for hassle-free straightening while charging.



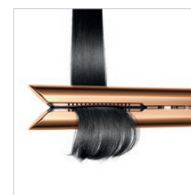
Cordless versatility
Style cordless with the thermal performance of a corded straightener.



Precision for all hair types
Switch between three heat settings to suit your client. Intelligent heat control ensures consistent thermal performance.



Style for longer
Delivers up to 30 minutes of cordless styling.¹ Fully recharges in just 70 minutes.



Half the damage²
Our flexing plates shape to gather each section, so you can style with 50% less breakage,² less frizz and fewer flyaways.³



Durable finish. Long cable.
A highly durable finish withstands daily rigours, while the 4.7m cable magnetically swivels for ease around clients.

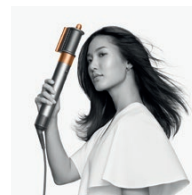


Hybrid charge mode
For even longer sessions, start with your straightener fully charged and style with the magnetic 360° cable.

1. Exact run time depends on your hair and styling habits. 2. Thermal damage measured by breakage using internal laboratory testing after approximately 6 months use and a usage rate of three times a week. Damage assessed after creating an equivalent style with Corrale vs. Corrale with solid plates. 3. Direct image analysis vs untreated hair.

dyson airwrap

Curl. Shape. Smooth and hide flyaways.
With no extreme heat.



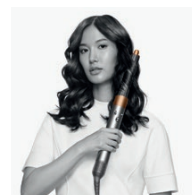
Prepare hair for styling

In Drying mode, the Coanda smoothing dryer removes excess moisture quickly and efficiently, so you're ready to style.



Style with control

Enhanced Coanda airflow attracts and aligns hair to the brush surface, giving you increased control for straighter styles.¹



Faster curls and waves²

Switch airflow direction as you style and create clockwise and anti-clockwise curls with one barrel, reducing styling time.



Smoother, shiny finish³

In Smoothing mode, the Coanda smoothing dryer uses two jets of air simultaneously to hide flyaways and perfect your end style.³

What's in the box



Coanda smoothing dryer

Dry, smooth and hide flyaways with one multifunctional attachment.³



30mm Airwrap™ barrel

Voluminous curls or waves for short and longer hair.



40mm Airwrap™ barrel

Loose curls or waves for short and longer hair.



Soft smoothing brush

Creates a smooth, straighter style for fine hair.¹



Round volumising brush

For curly and coily hair. De-tangles and lengthens hair as it dries.



Firm smoothing brush

Creates a straighter style with less frizz and fewer flyaways.⁴



Filter cleaning brush

Filter cleaning brush for your Dyson Airwrap™.

1. vs. original Dyson Airwrap™ smoothing brushes. 2. vs. original Dyson Airwrap™ barrels. 3. For use on dry and straight[ened] hair. 4. vs untreated hair.

Overview



| | | | |
|------------------|-------------------------------|-------------------------------|-------------------------------|
| Colour | Bright Nickel/ Rich Copper | Rich Copper/ Bright Nickel | Rich Copper/ Bright Nickel |
| Weight (g) | 659 | 561 | 592 |
| Dimensions (mm) | 245x97x78 | 292x45x41 | 272x41x48 |
| Cable length (m) | 2.70 | 3.20 | 2.67 |



professional

| | | |
|---------------------|---|--------------|
| Colour | Nickel/Silver | Black/Purple |
| Additional features | Professional styling concentrator Heavy duty filter Hidden cold shot button Exclusive colour | 561g |
| Cable length (m) | 3.30 | 4.70 |



dyson

Powerful, versatile cleaning for your business

Dyson cordless vacuums are engineered to make cleaning your workplace easier. With up to 60 minutes of fade-free suction¹ and the ability to transform to a handheld in one click, the Dyson cordless range can provide powerful, top-up cleaning whatever your working environment.



1. Suction tested to EN IEC62885-4 CL5.8 and CL5.9, tested at the flexible inlet, loaded to bin full, in Boost mode against the cord-free stick market. (Sales data from Apr 2020 to Mar 2021).

Only a Dyson works like a Dyson Engineered to deep clean your office

Dyson vacuum technology is designed and tested for powerful suction on all floor types. Dyson vacuums are engineered to capture and contain household dirt and hair – even as small as allergens and bacteria.

Every Dyson vacuum converts to clean up high, down low and anywhere in between, with tools and accessories, engineered for specific cleaning tasks.

Energy-dense battery

Long-lasting, fade-free power to clean here, there and everywhere around your office.⁴



Powerful Dyson suction¹

A lightweight Dyson digital motor generates enough power to suck up microscopic particles, and invisible debris, hair and pet dander.

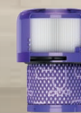


Root Cyclone™ technology

Dyson-pioneered cyclones capture dust and debris from the airflow, so there's no loss of suction.²

New Motorbar™ cleaner head technology

Automatically de-tangles hair from the brush bar.



Fully-sealed filtration

Dyson's whole-machine filtration traps particles as microscopically small as 0.3 microns – including pollen and dust mites.³

1. Suction tested to EN IEC62885-4 CL5.8 and CL5.9, loaded to bin full, in Boost mode against cord-free stick market. 2. Suction tested to EN IEC62885-4 CL5.8 and CL5.9, loaded to bin full, in Boost mode. 3. Filtration tested against ASTM F3150, tested in Boost mode by independent third-party, SGS-IBR Laboratories US in 2020. 4. In Eco mode. Check model specifications for more details

dyson v15 detect

Dyson's most powerful,
intelligent cordless vacuum.¹



Floor dok™ optional



**60
MINS**

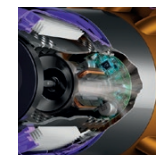
60 minutes of run time²
Additional batteries
available to buy separately
for even longer cleans.



More flexibility
Without the awkwardness
and weight of a corded
vacuum, it's easier to clean
up high, down low and in
between.



Click-in battery³
Remove and replace at the
press of a button for even
longer cleans – and to charge
on or off the machine.



230AW of suction power⁴
A Dyson Hyperdymium™
motor spins up to
125,000rpm, generating
230AW of powerful suction
for a deep clean.

1. Suction tested to EN IEC62885-4 CL5.8 and CL5.9, tested at the flexible inlet, loaded to bin full, in Boost mode against the cord-free stick market. (Sales data from Apr 2020 to Mar 2021). 2. Applies in eco mode on hard floor. Actual run time will vary based on power mode, floor type and/or attachments used. 3. Additional battery and charger, available to buy separately on the Dyson website. 4. Suction tested to EN 60312-1 CL 5.8 & CL5.9 at the hose/wand, loaded to bin full, in Boost mode.

dyson v12 detect slim

Dyson's most powerful,
compact cordless vacuum.¹



Floor dok™ optional



**60
MINS**

60 minutes run time²

Additional batteries available to buy separately for even longer cleans.



Lightweight cordless cleaning
The latest Dyson technology in a machine weighing just 2.2kg.



Click-in battery³
Remove and replace at the press of a button for even longer cleans – and to charge on or off the machine.



Single-button power control
Press the Power button once for comfortable, continuous cleaning.

1. Lightweight compared to other Dyson cordless vacuums. 2. Applies in eco mode on hard floor. Actual run time will vary based on power mode, floor type and/or attachments used. 3. Additional battery and charger, available to buy separately on the Dyson website.

dyson v11

Intelligently calculates and displays run time for a more informed clean.



Floor dok™ optional



60 MINS

60 minutes of run time¹
Additional batteries available to buy separately for even longer cleans.



Motorbar™ cleaner head
Deep cleans carpets, removes dust and debris from hard floors. Automatically de-tangles hair.



Click-in battery²
Remove and replace at the press of a button for even longer cleans – and to charge on or off the machine.



The right mode for you
Choose from three cleaning modes – for the perfect balance of power and run time.³

1. Applies in eco mode on hard floor. Actual run time will vary based on power mode, floor type and/or attachments used. 2. Additional battery and charger, available to buy separately on the Dyson website. 3. Best accuracy achieved in Auto mode. Auto ramp feature in Auto mode only. Testing based on average in home usage according to Dyson internal test data. Microscopic dust is defined as particles less than 100 microns.

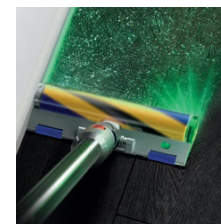
Overview



| Product name | V15 Absolute | V12 Absolute | V11 Absolute |
|--------------------------------|--------------|--------------|--------------|
| Weight (kg) | 3 | 2.40 | 3 |
| Dimensions (LxWxDmm) | 1260x266x250 | 1264x252x250 | 1261x261x250 |
| Suction power (AW) | 230 | 150 | 185 |
| Run time: | Up to 60 min | Up to 60 min | Up to 60 min |
| Bin size (l) | 0.76 | 0.35 | 0.76 |
| Also in the box: | | | |
| Fluffy Optic™ cleaner head | • | • | |
| Digital Motorbar™ cleaner head | • | • | |
| Motorbar™ cleaner head | | | • |
| Soft roller cleaner head | | | • |
| Low-reach adaptor | • | • | • |
| Crevice tool | • | • | |
| Combination tool | • | • | • |
| Wand clip | • | • | • |
| Charger | • | • | • |
| Docking station | • | • | • |



Digital Motorbar™ cleaner head
Deep cleans carpets, removes dust and debris from hard floors. Automatically de-tangles hair.



Fluffy Optic™ cleaner head
Reveals invisible dust on hard floors.¹



Low-reach adaptor
Engineered to clean further under furniture by adjusting the wand angle up to 90°.



Hair screw tool
Anti-tangle brush bar removes hair from pet beds, car seats and stairs. Fast.



Motorbar™ cleaner head
Motorised, edge-to-edge deep cleaning with de-tangling technology.



Soft roller cleaner head
Engineered with soft woven nylon and anti-static carbon fibre, for hard floors.



Mini soft dusting brush
Enclosed in a skirt of soft nylon bristles for gentle, vacuum-assisted dusting of delicate objects and surfaces.



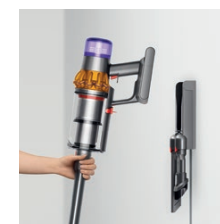
Crevice tool
Engineered for precise cleaning around tricky edges and into hard-to-reach, narrow spaces.



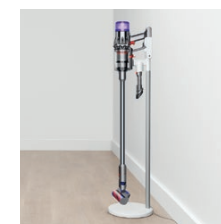
Combination tool
Two tools in one – wide nozzle and brush, for quick switching between cleaning and dusting tasks around your home or car.



Charger
Recharges your vacuum's battery with or without the docking station.



Docking station
Charge your vacuum between cleans and store tools.



Floor dok™
Free-standing, grab-and-go charging dock to tidily store your Dyson vacuum tools. No drilling required.

Find the right tools and accessories for your machine at [Dyson.com/tools](https://www.dyson.com/tools)

1. Illumination engineered for hard floors. Effectiveness of illumination influenced by ambient light conditions, debris type and surface.

dyson purifier

Air treatment in your workplace

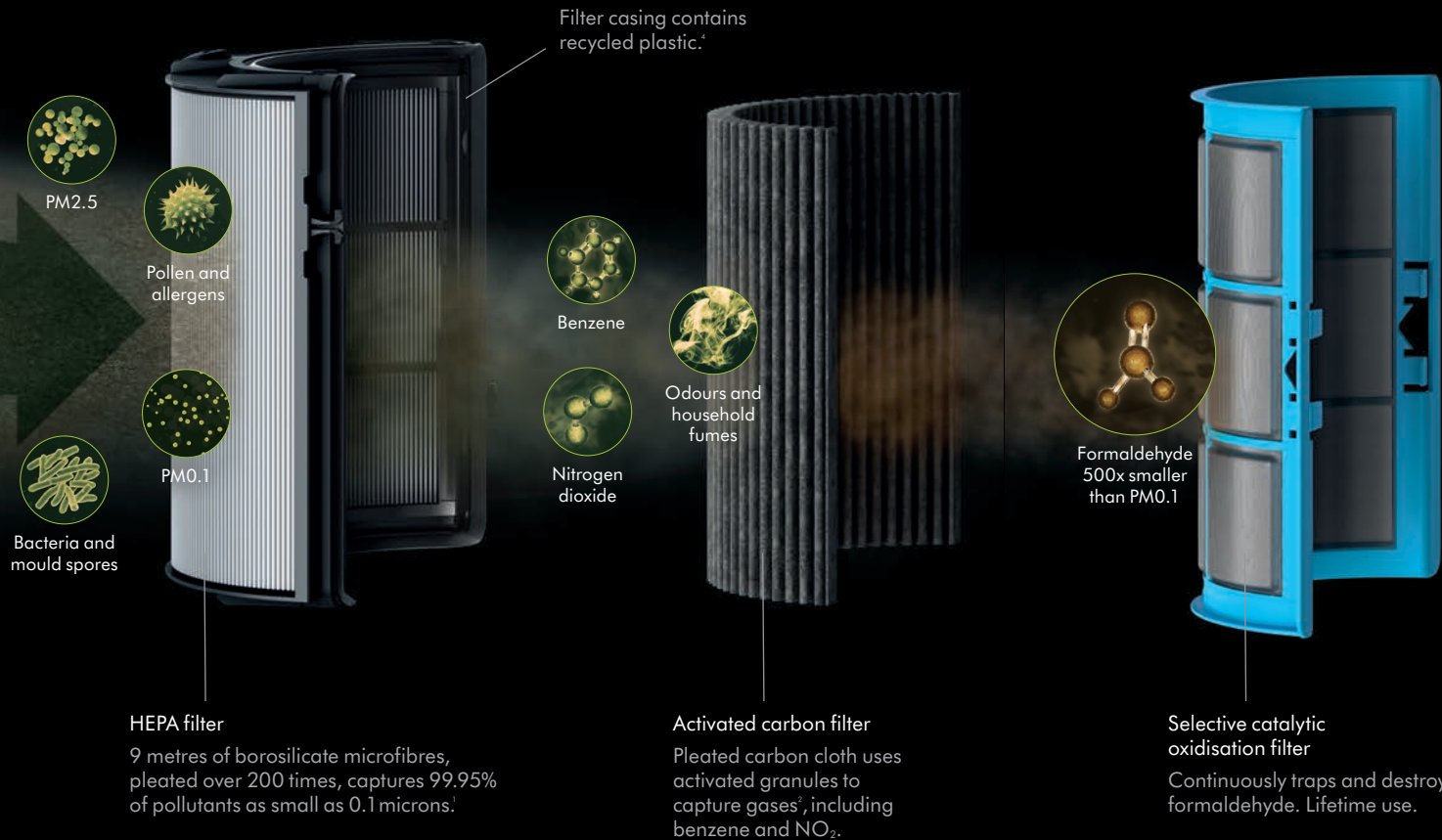
Pollution can build up indoors. Everyday items in commercial spaces, such as furniture and printers, can release potentially harmful pollutants. Dyson air purifiers create a cleaner, more comfortable environment for employees, students and guests.



Captures and destroys

Advanced HEPA filtration removes dust and allergens

The fully-sealed 360° HEPA filter captures 99.95% of ultrafine particles from the air.¹ Combined with activated carbon, it also removes odours and potentially harmful VOCs.² Dyson's unique catalytic filter also continuously traps and destroys formaldehyde molecules³ – and never needs replacing.



1. Tested for filtration efficiency at 0.1 microns (EN1822, ISO29463). 2. Gas capture rates vary. 3. Third party full machine testing based on GB/T 18801-2018 formaldehyde cumulative clean mass testing with continuous injection until plateau of formaldehyde CADR is achieved. Results may vary in practice. 4. Percentage varies.

dyson purifier big+quiet

Purifies



Features



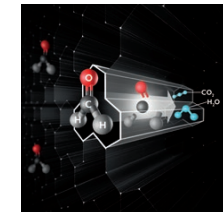
Purifies large spaces
Fully-sealed to HEPA H13 standard to capture 99.95% of pollutants as small as 0.1 microns. Purifying rooms up to 100m² evenly.¹



Quiet even at full power
The acoustically engineered motor bucket means it records just 55.6dBA of sound power at full speed.



Senses and reports CO₂ levels in real time²
The LCD screen displays when levels of CO₂ exceed 1500ppm.



Destroys formaldehyde, continuously³
Re-engineered larger filter traps formaldehyde in catalytic tunnels, continuously breaking it down into water and CO₂.



Activated carbon filter
Pleated carbon cloth uses activated granules to capture gases, including benzene and NO₂.⁴

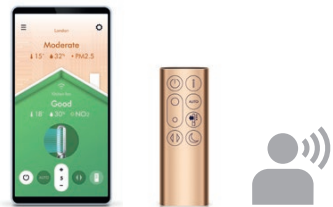


Easy filter replacement
HEPA H13 grade filter is 4x larger than previous generation and lasts up to 21900 hours.⁵

1. Test completed in a 100 m²/1000ft² (12.7m x 7.9m) room with the purifier placed in one corner and source of pollution in opposite corner. The room had 36 sensors to determine PM2.5 distribution and purification. Results may vary in practice. 2. Levels defined by Dyson based on scientific literature (Lowther et al. (2021) Environments). Ventilation alert when CO₂ levels are 1500ppm or above. 3. Third party full machine testing based on GB/T 18801-2022 formaldehyde cumulative clean mass testing with continuous injection until plateau of formaldehyde CADR is achieved. Results may vary in practice. 4. Gas capture rates may vary in practice. 5. Filter life is determined by dividing total dust load capacity by annual dust load. Annual dust load was calculated using GB/T 18801 daily mass formula. Results may vary in practice.

dyson purifier cool formaldehyde

Purifies
Cools you

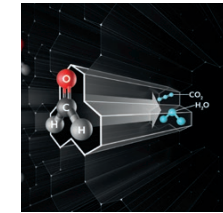


Smart technology controlled by app, voice or remote
Control and monitor air quality from anywhere using the MyDyson app.⁶ And control it hands-free with compatible voice services.⁷

Features



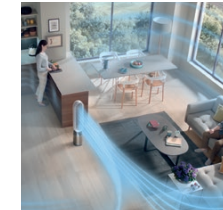
Senses and reports
Automatically detects formaldehyde, airborne particles and gases, then diagnoses and reports them in real time.



Destroys formaldehyde
Catalytic filter continuously destroys formaldehyde and doesn't need replacing.¹



Captures
HEPA and activated carbon filtration removes gases² and 99.95% of particle pollution.³



Circulates
Air Multiplier™ technology generates the circulation power to purify the whole room.⁴



Purifier fully sealed to HEPA standard⁵
Fully-sealed airflow and filtration system. So what goes inside, stays inside.



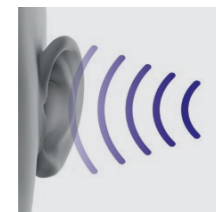
Cools you in summer
In warmer weather, a powerful stream of purified airflow can cool you down.



Diffused mode
Diverts airflow through the back of the machine. To purify, without cooling you.



Oscillates up to 350°
Adjustable oscillation projects purified air around the whole room.



20% quieter
Acoustically engineered to be 20% quieter than the previous model.



Night mode
Acoustically engineered to reduce turbulence, so it's 20% quieter than the previous model. Perfect for peaceful working environments or hotel rooms.

1. Third party full machine testing based on GB/T 18801-2018 formaldehyde cumulative clean mass testing with continuous injection until plateau of formaldehyde CADR is achieved. Results may vary in practice. 2. Gas capture rates vary. 3. Tested for filtration efficiency at 0.1 microns (EN1822). 4. In maximum setting. Tested for air projection, purification coverage in a 81m² room. 5. Particle challenge by DEHS oil specified in EN1822 within a chamber specified in ASTM F3150. Tested in Max Mode at IBR US, for whole machine efficiency above 99.95%. 6. Requires device to run app, Wi-Fi or mobile data, Bluetooth 4.0 support, and iOS version 14.0 or Android version 8.0 (or above). Standard data and messaging rates may apply. The Bluetooth® word mark and logos are registered trademarks owned by the Bluetooth. SIG, Inc. and any use of such marks by Dyson is under license. 7. Refer to the MyDyson app for compatible voice services.

dyson purifier cool autoreact



Purifies
Cools you

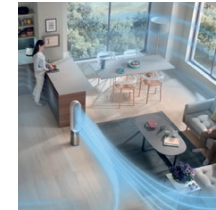
Features



Senses and reports
Automatically detects airborne particles and gases, then diagnoses and reports them in real time.



Captures
HEPA and activated carbon filtration removes gases¹ and 99.95% of particle pollution.³



Circulates
Air Multiplier™ technology generates the circulation power to purify the whole room.⁴



Purifier fully sealed to HEPA standard⁵
Fully-sealed airflow and filtration system. So what goes inside, stays inside.



Cools you in summer
In warmer weather, a powerful stream of purified airflow can cool you down.



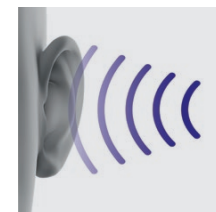
Diffused mode
Diverts airflow through the back of the machine. To purify, without cooling you.



Oscillates up to 350°
Adjustable oscillation projects purified air around the whole room.



Easy filter care
Your HEPA+Carbon filter is easy to change and the LCD screen will alert you when it's time.



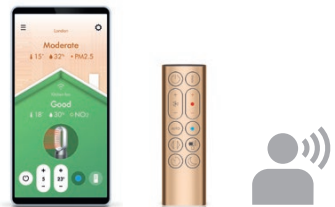
20% quieter
Acoustically engineered to be 20% quieter than the previous model.



Night mode
Acoustically engineered to reduce turbulence, so it's 20% quieter than the previous model. Perfect for peaceful working environments or hotel rooms.

1. Third party full machine testing based on GB/T 18801-2018 formaldehyde cumulative clean mass testing with continuous injection until plateau of formaldehyde CADR is achieved. Results may vary in practice. 2. Gas capture rates vary. 3. Tested for filtration efficiency at 0.1 microns (EN1822). 4. In maximum setting. Tested for air projection, purification coverage in a 81m² room. 5. Particle challenge by DEHS oil specified in EN1822 within a chamber specified in ASTM F3150. Tested in Max Mode at IBR US, for whole machine efficiency above 99.95%.

dyson purifier hot+cool formaldehyde

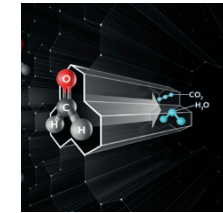


Smart technology controlled by app, voice or remote
Control and monitor air quality from anywhere using the MyDyson app.⁶
And control it hands-free with compatible voice services.⁷

Features



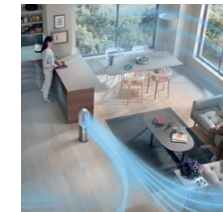
Senses and reports
Automatically detects formaldehyde, airborne particles and gases, then diagnoses and reports them in real time.



Destroys formaldehyde
Catalytic filter continuously destroys formaldehyde and doesn't need replacing.¹



Captures
HEPA and activated carbon filtration removes gases² and 99.95% of particle pollution.³



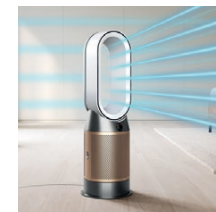
Circulates
Air Multiplier™ technology generates the circulation power to purify the whole room.⁴



Purifier fully sealed to HEPA⁵
Fully-sealed airflow and filtration system. So what goes inside, stays inside.



Heats in winter
With long-range projection, it's quick to heat the whole room evenly.⁴



Cools you in summer
In warmer weather, a powerful stream of purified airflow can cool you down.



Diffused mode
Diverts airflow through the back of the machine. To purify, without cooling you.



Oscillates up to 350°
Adjustable oscillation projects purified air around the whole room.



Night mode
Acoustically engineered to reduce turbulence, so it's 20% quieter than the previous model. Perfect for peaceful working environments or hotel rooms.

1. Third party full machine testing based on GB/T 18801-2018 formaldehyde cumulative clean mass testing with continuous injection until plateau of formaldehyde CADR is achieved. Results may vary in practice. 2. Gas capture rates vary. 3. Tested for filtration efficiency at 0.1 microns (EN1822). 4. In maximum setting. Tested for air projection, purification coverage in a 81m³ room and heating performance in a 35m³ room. 5. Particle challenge by DEHS oil specified in EN1822 within a chamber specified in ASTM F3150. Tested in Max Mode at IBR US, for whole machine efficiency above 99.95%. 6. Requires device to run app, Wi-Fi or mobile data, Bluetooth 4.0 support, and iOS version 10 or Android version 5 (or above). Standard data and messaging rates may apply. 7. Refer to the MyDyson app for compatible voice services.

Overview



dyson purifier big+quiet

Purifies



dyson purifier cool formaldehyde

Purifies
Cools you



dyson purifier cool autoreact

Purifies
Cools you



dyson purifier hot+cool

Purifies
Heats
Cools you

| | | | | |
|--|---|---|---|---|
| Purifier fully sealed to HEPA standard ¹ | • | • | • | • |
| Senses formaldehyde | • | • | | • |
| Senses PM10, PM2.5, VOCs, temperature and humidity | • | • | • | • |
| Catalytic filter to destroy formaldehyde ² | • | • | | • |
| HEPA and carbon filters to capture pollutants and gases ³ | • | • | • | • |
| Whole-room purification ⁴ | • | • | • | • |
| Even room heating ⁵ | | | | • |
| Cools you with purified air | | • | • | • |

1. Particle challenge by DEHS oil specified in EN1822 within a chamber specified in ASTM F3150. Tested in Max Mode at IBR US, for whole machine efficiency above 99.95%. 2. Third party full machine testing based on GB/T 18801-2018 formaldehyde cumulative clean mass testing with continuous injection until plateau of formaldehyde CADR is achieved. Results may vary in practice. 3. Tested for filtration efficiency at 0.1 microns (EN1822). Gas capture rates vary. 4. In maximum setting. Tested for air projection, purification coverage in a 81m² room. 5. Tested for heating performance in a 35m² room.

dyson solarcycle

Dyson lighting

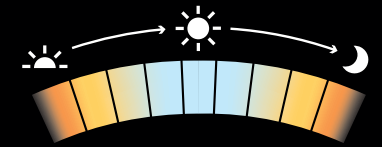
Engineered to support wellbeing and task performance, Dyson lighting provides the powerful light you need, precisely where you need it. Transform home and office spaces with long-lasting LED light, custom-engineered optics and Heat Pipe technology that protects light quality for decades.



Most lights don't change. This light changes everything.

The Dyson Solarcycle Morph™ light has intelligently-controlled LEDs that adjust brightness and colour temperature for your task, age, mood and time of day. Its precision-engineered mechanics let you change the light's format.

Dyson daylight tracking technology
Provides the right light for the time of day.



Intelligently-controlled optical driver
Precisely adjusts the LEDs.

Heat Pipe cooling technology
Maintains light quality for decades.¹

3-Point Revolve motion
Enables multiple light formats.



Energy-saving motion sensor
Auto on/off.

Colour-mixing chamber
Mixes light for uniform illumination.

Auto-brightness sensor
Adjusts to changes in surrounding light.

Dynamic colour tuning
From 2700K–6500K.



Connects for personalisation
Adapts to your task, age, mood and sleep times. Controlled by the MyDyson app.²

1. LED-life calculation is based on L70 measurement according to IEC 62717, with an estimation of 8 hours' usage per day. Real-life results may vary. 2. Requires device to run app, Wi-Fi or mobile data, Bluetooth® 4.0 support, and iOS version 10 or Android version 5 (or above). Standard data and messaging rates may apply. The Bluetooth® word mark and logos are registered trade marks owned by the Bluetooth SIG, Inc. and any use of such marks by Dyson is under license.

dyson solarcycle morph

With intelligent daylight tracking and light quality that lasts 60 years¹



White/Silver



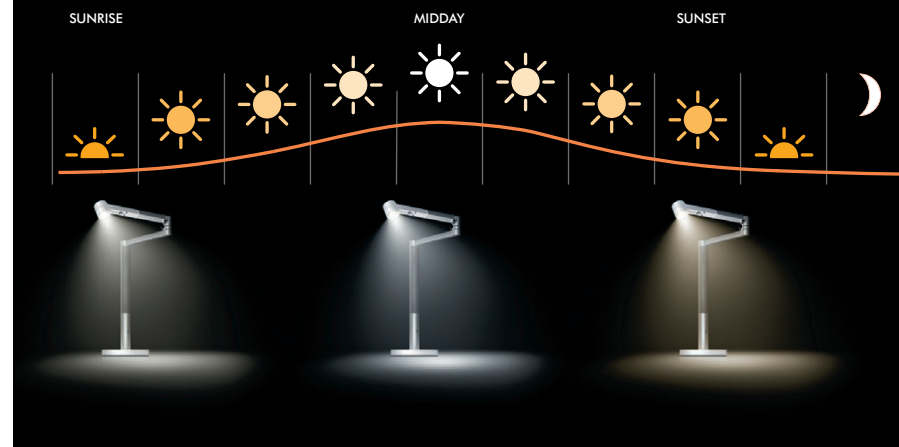
Black/Black



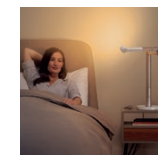
Connects for personalisation
Adapts to your task, age, mood and sleep times. Controlled by the MyDyson app.²

To rethink lighting, we studied the sun

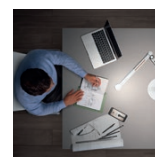
Our bodies can be influenced by cycles of sunlight, yet we spend up to 90% of our time indoors.¹ That's why, in 2014, we set about developing a light that could adjust with the daylight where you live. Our unique time, date and GPS-driven algorithm tracks the colour temperature and brightness of daylight, in any global location.



Study mode
Powerful light, designed to help you study under the right light for the time of day.



Wake up mode
Schedule your light to switch on and brighten gradually. To create a more natural wake-up environment.



Precision mode
High-intensity light with a CRI of 90, helps improve visual performance² for intricate tasks.



Relax mode
Provides a relaxing colour temperature with a low intensity.



Age adjust
Auto-corrects light to increase brightness as you get older.³



Away mode
Set your light to switch on and off while you're away, to imitate human presence.

1. LED-life calculation is based on L70 measurement according to IEC 62717, with an estimation of 8 hours' usage per day. Real-life results may vary. 2. Requires device to run app, Wi-Fi or mobile data, Bluetooth[®] 4.0 support, and iOS version 10 or Android version 5 (or above). Standard data and messaging rates may apply.



"To pioneer, you can't be afraid to go back to the drawing board. We've engineered a purifier that doesn't compromise on anything. It's quiet, even at full power."

James Dyson

James Dyson
Founder and engineer



Guaranteed for 2 years. Parts only.

Buy or lease Dyson Technology

More information:

0800 0206 204 (NL) / 0800 392 08 (BE)

professional@dyson.nl / professional@dyson.be

www.Dyson.nl / www.Dyson.be